

## **easyQ DLA Compact Embedded (eQCE)**

Delamination appliance for glue lines

acc. EN 14080/391/302, JAS, ASTM, AS/NZS and AITC etc.



easyQ® - Simply checked! Don't leave anything to change.

### **Delamination test new developed**

- Compact design with front door
- Full-automatic incl. vessel control
- Charting and Datalogging
  - Vacuum / pressure
  - Fill level vessel
  - Temperature and air humidity
  - Air speed
- Air speed stepless adjustable
- Extremely silent and energy-saving
- Remote diagnosis via internet
- Tests according EN 14080 / 302 / 391, JAS 235, ASTM D 2559, AS/NZS 1428, AITC T110 and freely programmable
- Cost-efficient

### **Functions**

Delamination apparatus for testing of glue line integrity. Watering of samples in pressure- / vacuum- vessel. Drying in dehydration cabinet with air circulation and PC-climate-control. The ratio of length of cracked glue line to total length is an indicator for the quality and integrity of the gluing and must not overstep specified limits.

#### **Vacuum- / pressure- vessel**

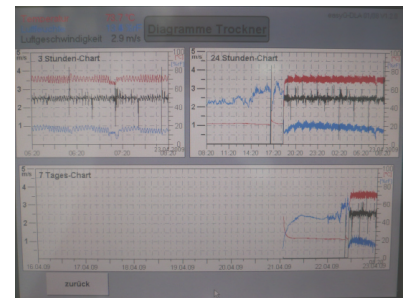
Vessel, made from special steel with dome cover (autoclave), pump and control system. The samples were inlayed into autoclave, automatic flown with water and acc. used standard exposed to vacuum and pressure. Vessel capacity 150 ltr. Electronic data logging, full automatic circle control.



#### **Dehydration cabinet**


Drying cabinet with air circulation, heating, automatic air humidification and climate control. 90mm heat insulation. PC/PLC control system (Windows), Plant visualisation and operation on 10" colour touch panel. Capacity of testing room ca. 170 ltr. Air speed stepless adjustable from 1 – 4 m/sec. Wind tunnel cassette.

Easy loading through front door.



[easyQCE on YouTube](#)

Minimized deployment due to full-automatic and monitoring system. DIN/EN/CE-conform.

**easyQ  DLA** *up-to-date, fully automatic, cost-effective*